
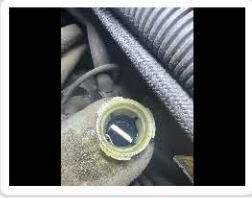



Vehicle 2007 Chevrolet Impala Mileage In: 79431	From Carson, Jaymar Retail Sales Manager Dobbs Tire & Auto Centers - Sunset Hills - 1030 10899 Sunset Plaza	Swanson, Nathan Chandler Tire Technician
--	--	--


6 ITEMS HAVE SERVICE REQUIRED	
Dash warning lights	<p>Observations:</p> <p>Finding: Tire pressure light flashing Recommendation: Needs 4 sensors</p> <p>Photos:</p> <div style="text-align: center;">  </div>
Other findings	<p>Observations:</p> <p>Finding: Other Recommendation: Noise coming from HVAC requires diagnostic</p>
Alignment	<p>Observations:</p> <p>Finding: Visual Recommendation: Perform wheel alignment</p> <p>Photos:</p> <div style="text-align: center;">  </div>
Power steering fluid	<p>Observations:</p> <p>Finding: Check vehicle history Recommendation: Fluid very dark</p>
Brake fluid	<p>Observations:</p> <p>Finding: Due by mileage/time Recommendation: Recommend change/flush</p> <p>Photos:</p>



Engine oil leak(s)	Observations:
	Finding: Engine oil leak(s) found
	Recommendation: Clean and monitor

5 ITEMS HAVE SERVICE SUGGESTED

Transmission fluid	Observations:
	Finding: Check vehicle history Recommendation: Recommend change/flush
	Photos: 

Battery	Observations: Rated CCA battery measurement: 685. Actual CCA battery measurement: 562.
	Finding: Marginal Recommendation: Charge/test battery
	Photos: 

Engine air filter(s) and minder	Observations:
	Finding: Engine air filter(s) dirty Recommendation: Other
	Photos: 

Front brake pads	Observations: Driver side front brake pads: 6. Passenger side front brake pads: 6.
	Finding: Front brake pads at service limit Recommendation: Replace front brake pads
	Photos:



Rear brake pads/shoes

Observations:

Driver side rear brake pads/shoes: 6.
Passenger side rear brake pads/shoes: 6.

Finding: Rear brake pads/shoes at service limit

Recommendation: Replace rear brake pads/shoes

Photos:



56 ITEMS ARE OK!

- ✓ Vehicle Images
- ✓ Oil change sticker
- ✓ Windshield wiper blade(s)
- ✓ Horn
- ✓ Other findings

- ✓ Front tire pressure
Observations:
Driver Side front pressure set to (psi): 36
Passenger Side front pressure set to (psi): 36

- ✓ Rear tire size

- ✓ Other findings
- ✓ Headlights
- ✓ Front signal light
- ✓ Side marker light
- ✓ All rear lights functioning
- ✓ Third Brake Light
- ✓ Tail light
- ✓ License plate light
- ✓ Engine oil
- ✓ Drive belts
- ✓ Radiator, hoses/clamps

- ✓ Safety inspection/emission stickers

- ✓ Windshield
- ✓ Windshield washer system
- ✓ Road test findings
- ✓ Front tire tread wear

- Observations:
Driver Side front tread depth (in 32nds): 7
Passenger Side front tread depth (in 32nds): 7

- ✓ Other findings
- ✓ Rear tire tread wear
Observations:
Driver side rear tread depth (in 32nds): 8
Passenger side rear tread depth (in 32nds): 8

- ✓ Rear tire pressure
Observations:
Driver side rear pressure set to (psi): 36
Passenger side rear pressure set to (psi): 36

- ✓ All front headlights functioning
- ✓ Fog lights
- ✓ Front running light
- ✓ Other findings
- ✓ Brake light
- ✓ Rear signal light
- ✓ Back-up light
- ✓ Other findings
- ✓ Other findings
- ✓ Timing belt(s)
- ✓ Heater hoses/clamps

- ✓ Cabin/pollen air filter(s)
- ✓ Spark plugs
- ✓ Front brake rotors
- ✓ Steering components
- ✓ Front joints and linkages
- ✓ Front CV drive axle
- ✓ Rear joints and linkages
- ✓ Rear springs
- ✓ Catalytic converter(s)
- ✓ Muffler
- ✓ PCV valve
- ✓ Other findings
- ✓ Rear brake rotors
- ✓ Front suspension components
- ✓ Front struts
- ✓ Rear sway links/bushings
- ✓ Rear shocks
- ✓ Exhaust manifold(s)
- ✓ Exhaust pipes